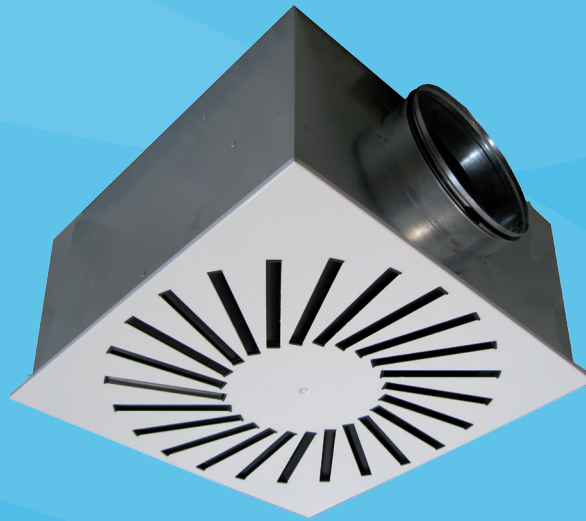


JTH

Swirl Diffuser with adjustable black air control blades



Application

- Used in industrial or comfort ventilation rooms.
- For air supply and exhaust in ventilation and air conditioning systems. Intended to be used in low and medium pressure ventilation systems.
- Ideal for use in heating and cooling applications.
- High mixing rate, suitable for constant volume and variable volume systems.

Description

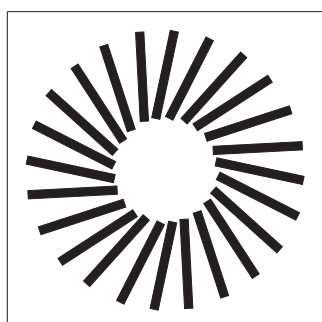
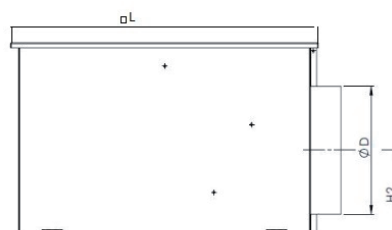
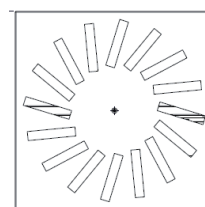
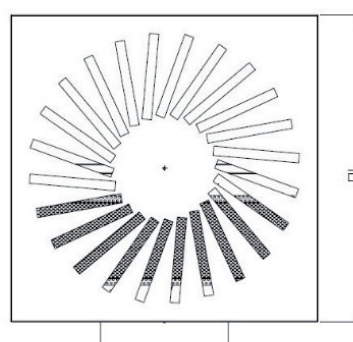
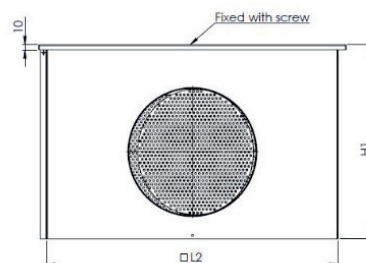
- Swirl diffuser completed with adjustable black plastic air control blades and plenum with perforated equalizing plate.
- Blades can be manually adjusted to give either horizontal or vertical discharge.
- Therefore discharge direction can be easily matched with changing building layouts.
- Installation using balancing plenum with side connection. Connection box made of galvanized sheet metal.

QUICK SELECTION

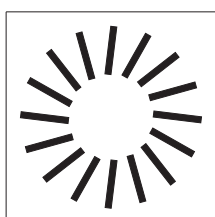
| qv | m ³ /h | 300 | 540 |
|-------------|-------------------|-----|-----|
| | l/s | 83 | 150 |
| JTH-395, 16 | LpA | 33 | |
| | ΔPst | 25 | |
| | ΔPtot | - | |
| | L 0.3 | 1.3 | |
| JTH-595, 24 | LpA | | 34 |
| | ΔPst | | 21 |
| | ΔPtot | | - |
| | L 0.3 | | 1.3 |

DIMENSIONS

| Size | L | L2 | H1 | H2 | DN |
|---------|-----|-----|-----|-----|-----|
| 395x395 | 395 | 379 | 270 | 134 | 200 |
| 595x595 | 595 | 562 | 375 | 207 | 250 |



JTH-595x595,
24 blade arrangement



JTH-395x395,
16 blade arrangement

Construction and finishing

- Square swirl ceiling diffuser in sizes 595x595 or 395x395 made of epoxy-polyester powder coated steel.
- The diffuser comprises 16 or 24 black plastic air control blades fitted within the square steel panel.
- The black plastic blades are individually adjustable and are developed for optimal diffusion, ensuring an instant mixture of primary and secondary air.
- Standard color is RAL9010.
- Other RAL chart colors available on request.
- Front panel detachable, allowing easy installation and cleaning.
- Diffusers are mounted to the air duct system with help of plenum box.
- Fixing of frontplate to plenum is by central screw, which is then covered by a plastic cap.
- Plenum box in galvanized steel.
- Insulated on 3 sides with perforated plate inside to equalize the pressure.
- Side connection of plenum box Ø200 or Ø250 mm.
- Duct connection with rubber gasket.
- Rubber gasket between plenum and diffuser to ensure airtightness.
- Adequate for paneled ceiling 400x400 or 600x600mm.

Function

- The high mixing of the swirl jet produced by the layout reduces the end velocity of jet and the temperature difference very quickly.
- This allows the air to be blown into the room free from draughts even under extreme conditions (very high air change and high Dt).
- The free cross-section is the same in all louvre positions, so that pressure loss and volume level do not change when the throw pattern is adjusted.
- Adjustment of air pattern is effected by changing position of blades.
- Ensures a high level of air flow volume and rapid air temperature change with low noise levels.
- Appropriate for differences in air supply temperature up to + 10°C to -10°C degrees.

Mounting

Light, easy to install.

Fixing to plenum with central screw and white coverscrew top.

Installation height between 2,6m and 4m.

Detachable front panel enables the cleaning of the diffuser.